

# Prime Office Space with Excellent Accessibility near Bendemeer MRT



## A 7-storey High-tech B1 multi-user industrial building

- Within the Kallang industrial area.
- Within walking distances to Boon Keng MRT Station (NE9), Lavender MRT Station (EW11)
- Just beside the upcoming Bendemeer MRT Station (DT23) on the Downtown Line.
- It is about a 10 minute drive from CBD.

Estate Agent License No  
L3008887C

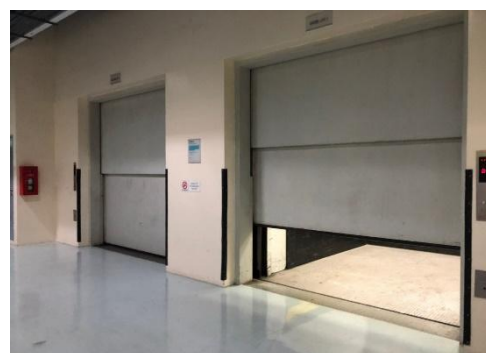
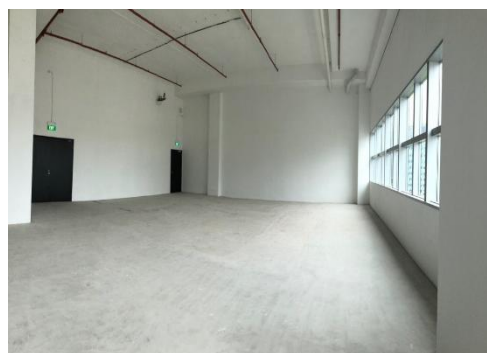
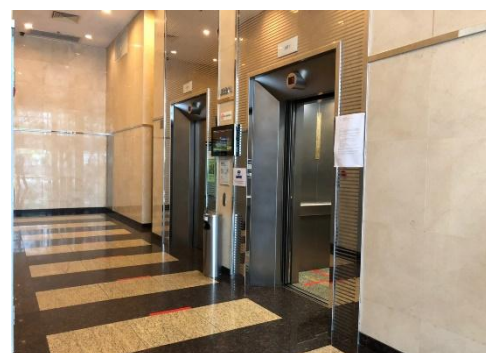
**Moving Ahead With  
Corporate Visions**



# BUILDING SPECIFICATIONS



Floor Loading	<ul style="list-style-type: none"> <li>1<sup>st</sup> level : 20 kPa</li> <li>2<sup>nd</sup> to 7<sup>th</sup> level : 12.5 kPa</li> </ul>
Floor Height	<ul style="list-style-type: none"> <li>B1 : 4.5m</li> <li>1<sup>st</sup> level :7.2m</li> <li>2<sup>nd</sup> to 7<sup>th</sup> level : 5.8m</li> </ul>
Parking Lots	<ul style="list-style-type: none"> <li>Car : 182</li> <li>Lorry :19</li> </ul>
Lift	<ul style="list-style-type: none"> <li>Passenger : 4</li> <li>Cargo : 2</li> </ul>
Loading / Unloading	<ul style="list-style-type: none"> <li>4</li> </ul>
Power Supply	<ul style="list-style-type: none"> <li>2 high tension 22KV service incomer feeder from</li> <li>SPPG HT Sub-Station at L1</li> <li>3 2000 KVA transformers serving entire bldg.</li> <li>2 1000 KVA emergency diesel generators</li> <li>Lightning protection System</li> <li>1 MDF room located at L1 with 16 incoming pipes</li> </ul>
Facilities	<ul style="list-style-type: none"> <li>CCTV system</li> <li>Public Address System</li> </ul>



Corporate Visions Pte Ltd Estate Agent Licence No L3008887C Tel : 65 6733 2911 Fax : 65 6733 6786 <https://corporatevisions.sg>

The information contained hereby is subject to change and cannot form part of an offer or contract. While every reasonable care has been taken in providing this information, the owner or its agent cannot be held responsible for any damage or loss suffered as a result of any inaccuracies in this documents. All interested parties shall make enquiries to satisfy themselves of any the information. Copyright@2012 .All rights reserved

Estate Agent License No  
L3008887C

Moving Ahead With  
Corporate Visions