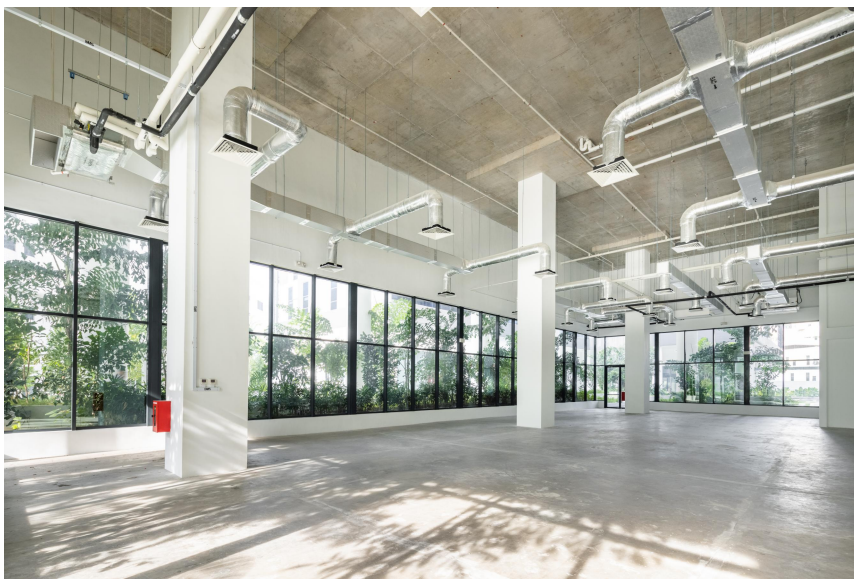


Premium B2 Office Spaces on the City's Fringe



Premium B2 Office Spaces on the City's Fringe comprises of 2 blocks of 9-storey high specifications development



Accessibility

- Strategic location in city fringe with direct access from PIE
- Walking distance to Geylang Bahru MRT station
- Shuttle bus to Potong Pasir & Aljunied MRT
- Easy access to major expressways

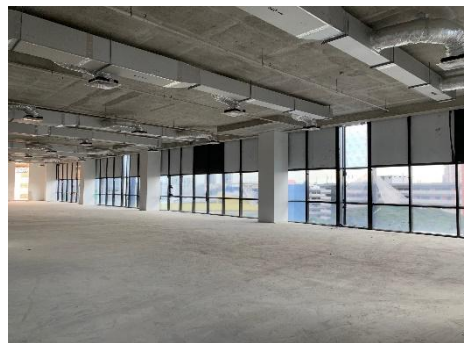
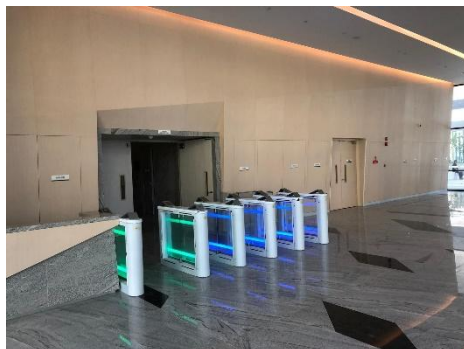
Estate Agent License No
L3008887C

Moving Ahead With
Corporate Visions

SPECIFICATIONS



Floor Area	GFA : 586,546 sq ft NLA: 40,713.3 sqm
Floor Loading	3.0 to 7.5kN/m ² (West Wing) 3.0 to 10kN/m ² (East Wing)
Ceiling Height	4.0 m to 9.8 m
Lifts	6 Passenger Lifts 2 Service Lifts
Loading Bay Facilities	Vehicular Access 20-footer (West Wing) 20 & 40-footer (East Wing)
Parking lots	171 lots
Power Supply Allocation	160 to 411 VA/m ²
Amenities	Ibis Styles Singapore on MacPherson Foodcourt @ Infineon Building Food Centre at 155A Kallang Way Food Centre at 5 Lorong Bakar Batu Hawker Centre at Geylang Bahru Central FairPrice supermarket



Corporate Visions Pte Ltd Estate Agent Licence No L3008887C Tel : 65 6733 2911 Fax : 65 6733 6786 www.corporatevisions.sg

The information contained hereby is subject to change and cannot form part of an offer or contract. While every reasonable care has been taken in providing this information, the owner or its agent cannot be held responsible for any damage or loss suffered as a result of any inaccuracies in this documents. All interested parties shall make enquiries to satisfy themselves of any the information. Copyright@2012 .All rights reserved

Estate Agent License No
L3008887C

Moving Ahead With
Corporate Visions